



Placement Report

PGDM 2021-23 Batch

The placement process for the PGDM 2021-23 batch has been completed with all the eligible students having been placed. The average pay students have obtained is INR 9.8 lakhs and highest being INR 13 lakhs. More than 25 companies have participated in the placement season. Top brands like Schneider Electric, Capgemini, Oracle, Wipro, Infosys, TTK Prestige, L'Oréal have participated. New top companies TietoEVRY India, Ultratech have been added this year.

The students have been placed in varied roles such as Management Trainee, Consultant, Business Analyst, Credit Analyst, Regional Area Sales Manager etc. It has been a stupendous performance thus far by our students, wherein the Institute has seen marquee companies visiting the campus and vying for our talents.

KEY HIGHLIGHTS

- 11 % Increase in Average Salary
- More than 8 Companies recruiting from 5 years and more.
- 5 New Recruiters

Top Recruiters

Schneider Electric, Capgemini, Infosys, Oracle, Wipro, Infosys BPM, Deloitte, Morgan Stanley, EY GDS, TietoEVRY India, TTK Prestige, HDFC Limited, L'Oréal, Federal Bank, Ujjivan SFB, ICICI Bank, Feedback Consulting

KEY STATISTICS CTC in INR Lakhs Per Annum

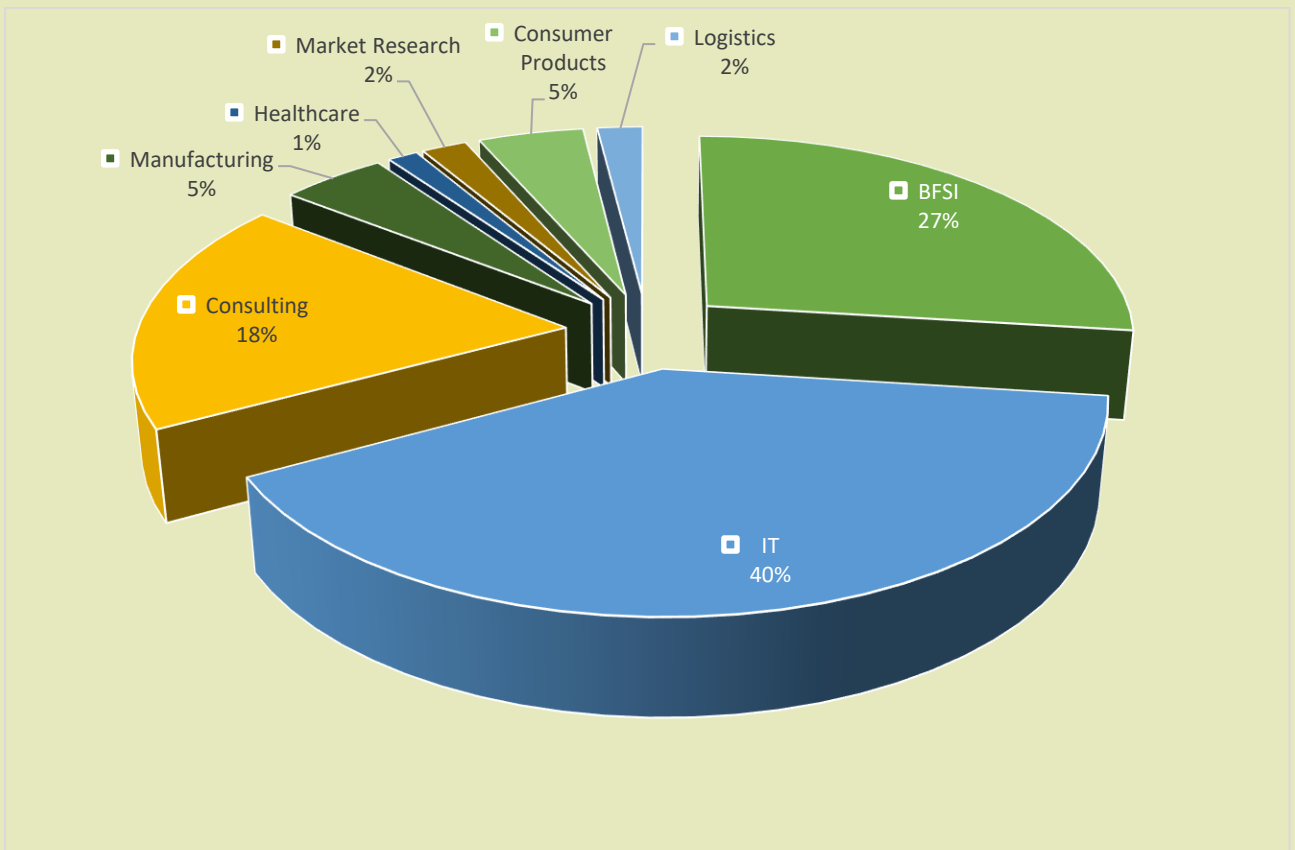
Highest **13**

Average **9.8**

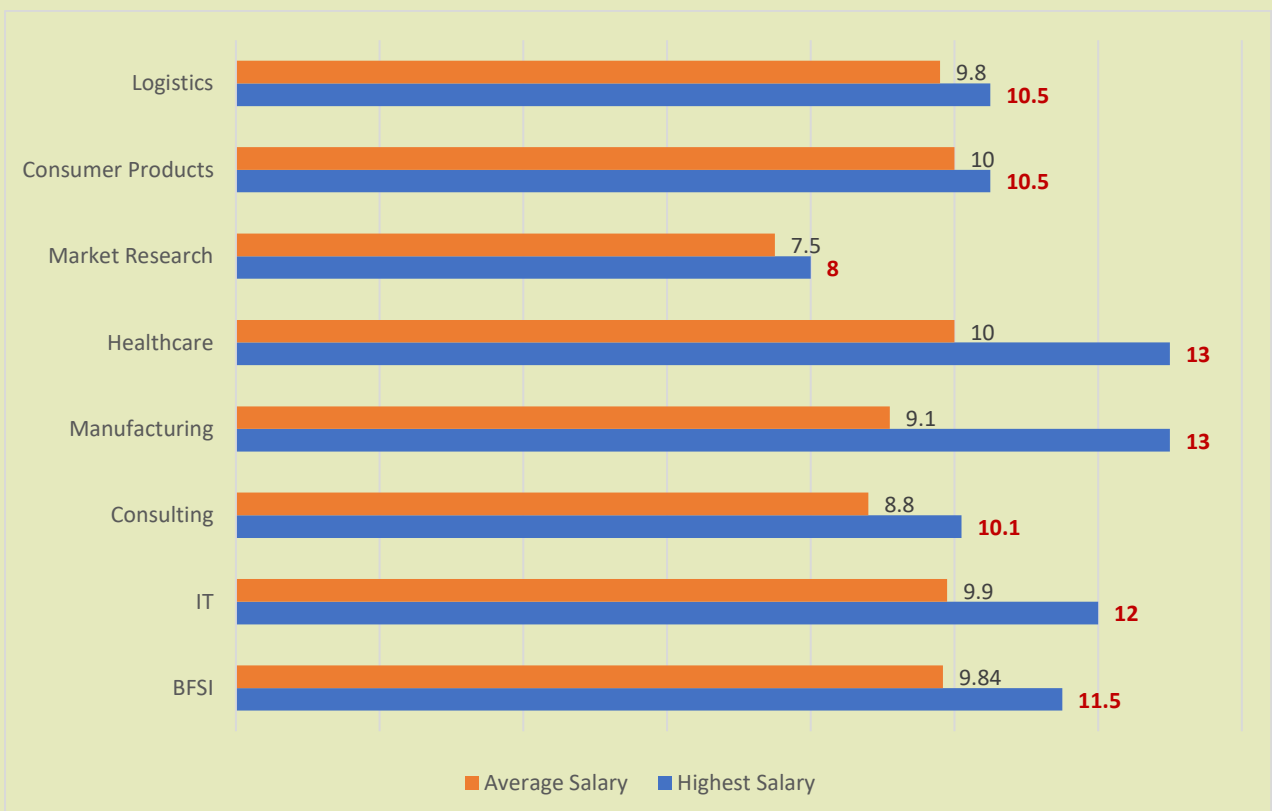
Top 10% Average **12**

Top 50% Average **11**

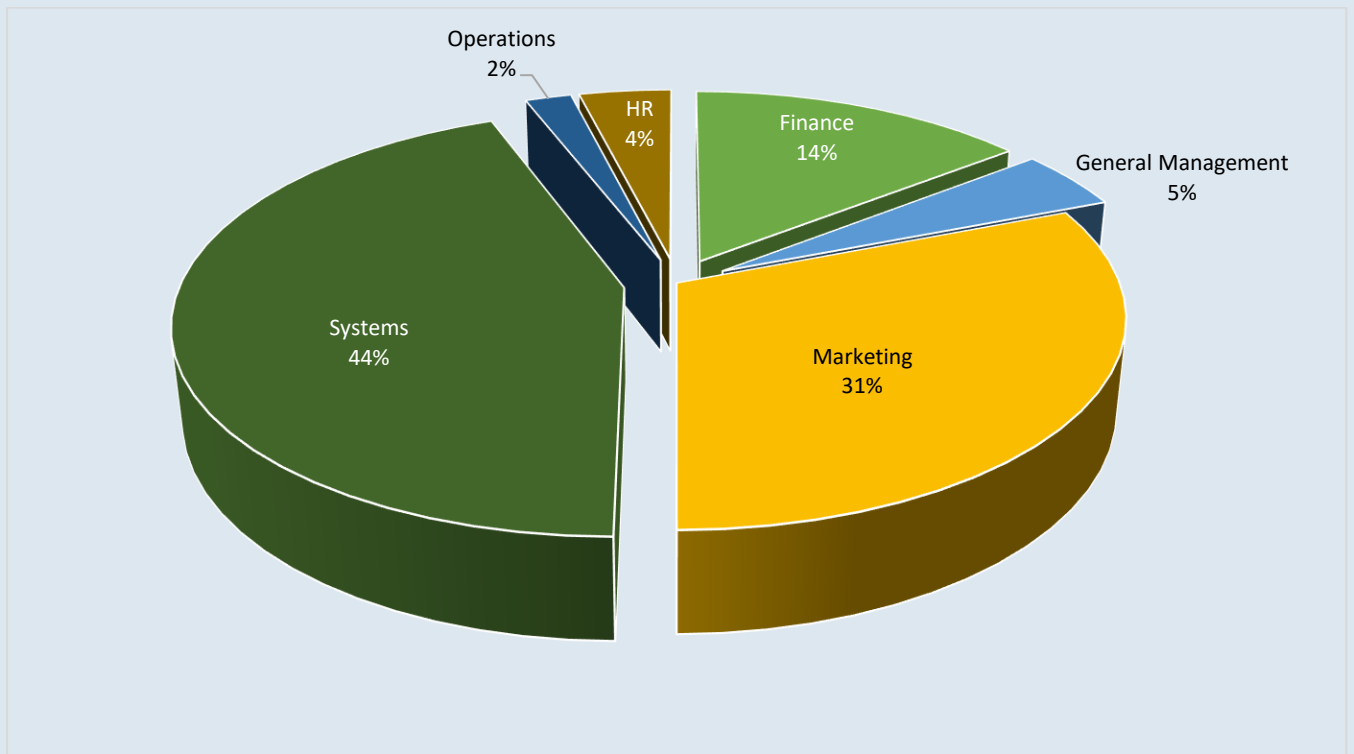
Sector Wise Distribution



Sector Wise Salary Distribution (CTC in INR Lakhs Per Annum)



Domain Wise Distribution



Domain Wise Salary Distribution (CTC in INR Lakhs Per Annum)

